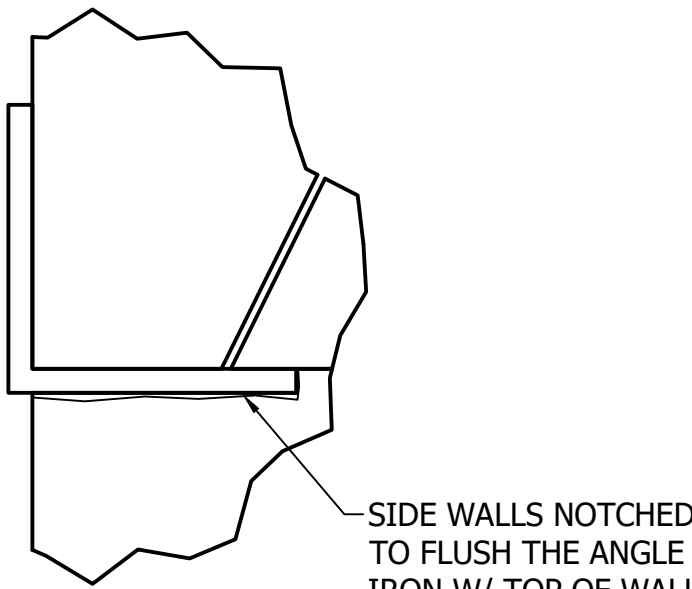


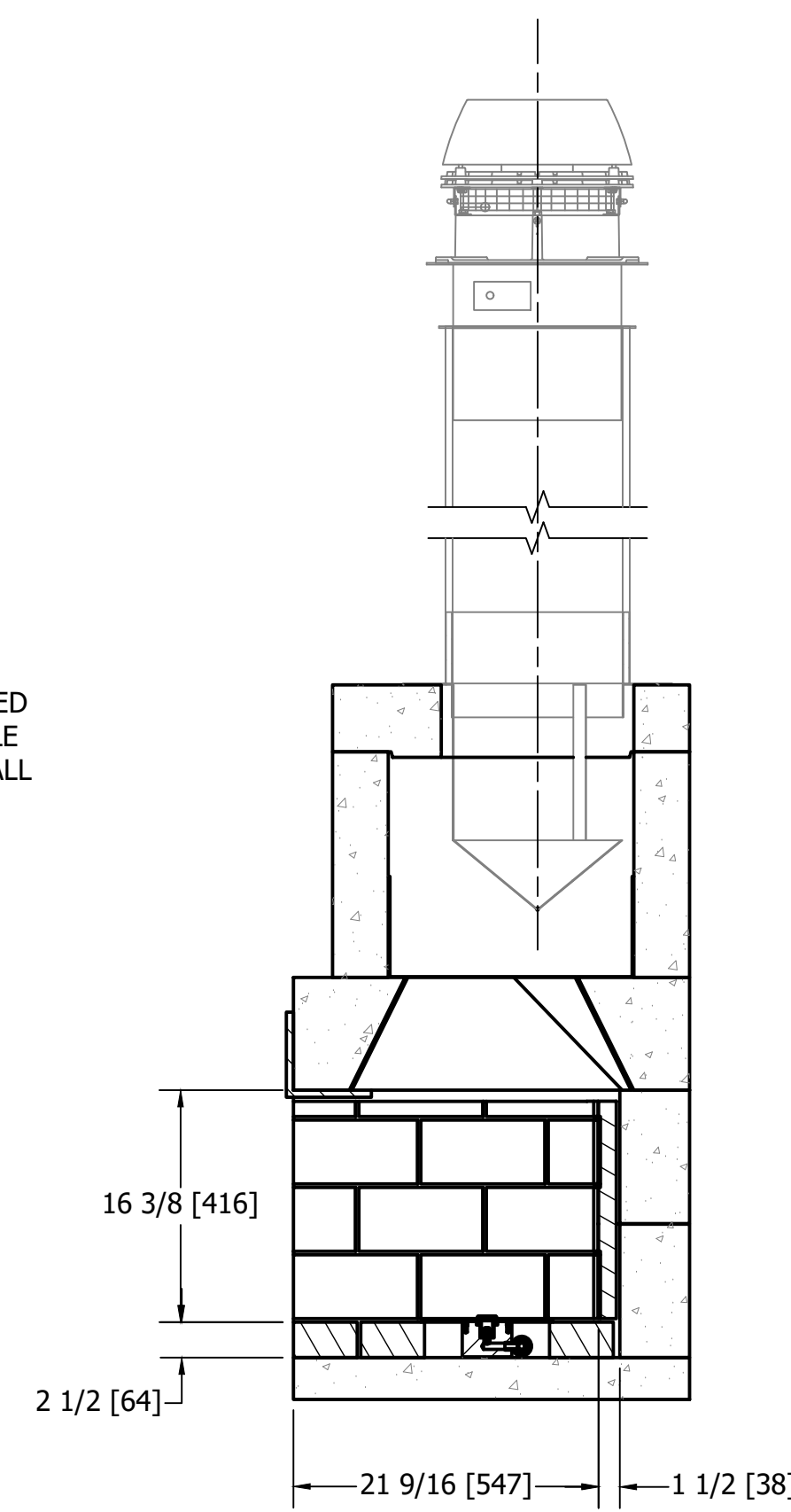
TOP VIEW

Ø345mm [13 9/16"] FLUE OUTLET.  
12" B-VENT PIPE W/ DOWN-DRAFT  
DIVERTER; ENERVEX 12" MFD,  
AND RS012 FAN REQUIRED.

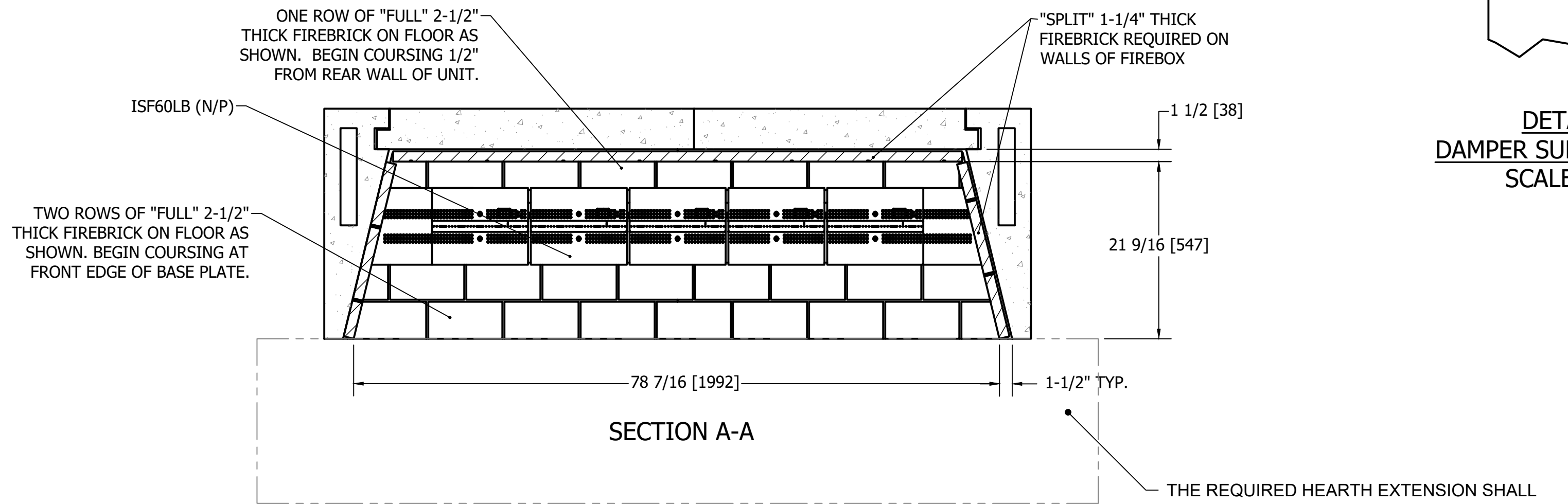
6"x6"x1/2" STEEL ANGLE  
(NOT PROVIDED BY  
EARTHORE, MUST  
SOURCE LOCALLY)



DETAIL A  
DAMPER SUPPORT ANGLE  
SCALE: N.T.S



SECTION B-B



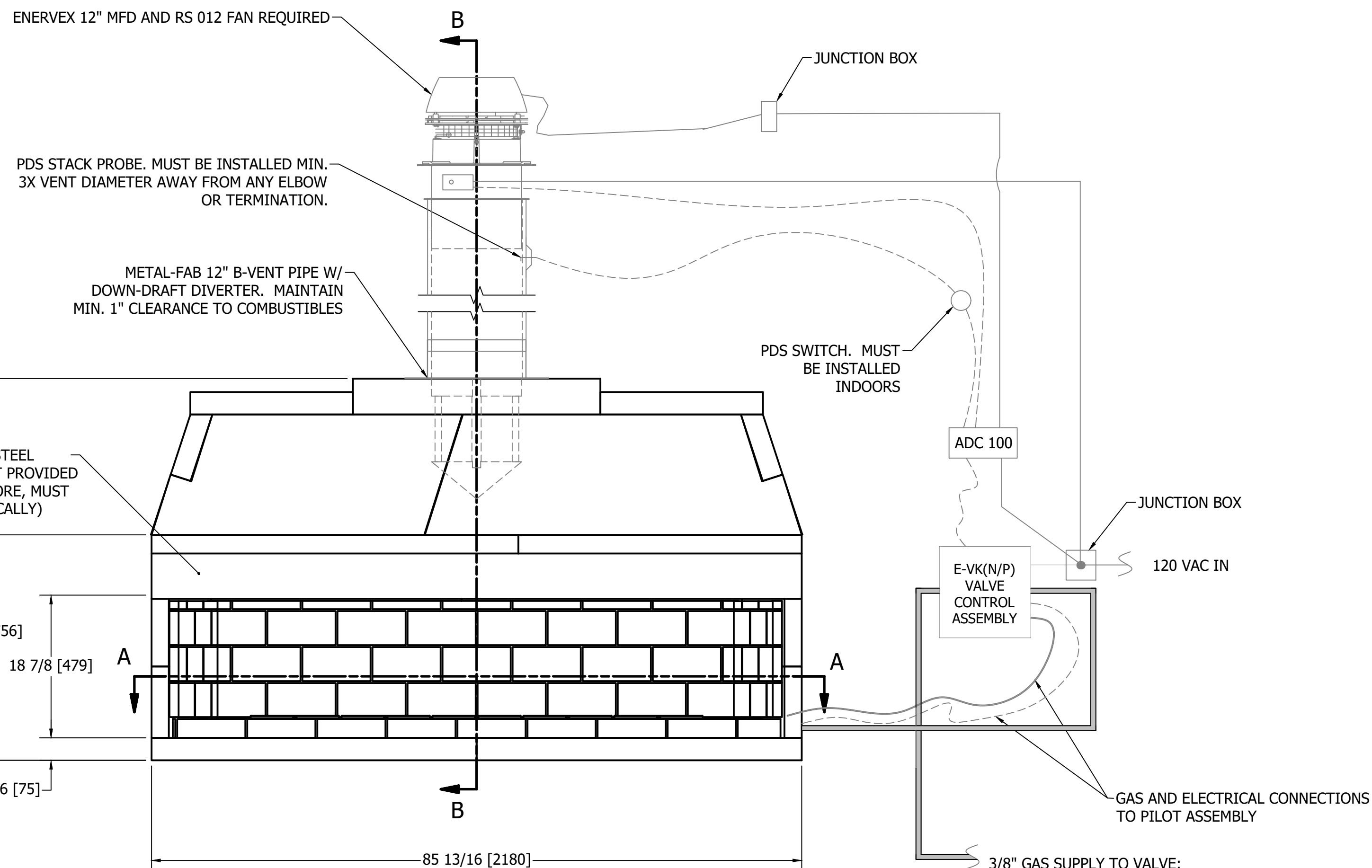
SECTION A-A

TWO ROWS OF "FULL" 2-1/2"  
THICK FIREBRICK ON FLOOR AS  
SHOWN. BEGIN COURSING AT  
FRONT EDGE OF BASE PLATE.

ONE ROW OF "FULL" 2-1/2"  
THICK FIREBRICK ON FLOOR AS  
SHOWN. BEGIN COURSING 1/2"  
FROM REAR WALL OF UNIT.

"SPLIT" 1-1/4" THICK  
FIREBRICK REQUIRED ON  
WALLS OF FIREBOX

THE REQUIRED HEARTH EXTENSION SHALL  
EXTEND A MINIMUM OF 20" TO THE FRONT AND  
12" TO THE SIDES OF FIREBOX'S FINISHED  
OPENING.



FRONT VIEW

ENERVEX 12" MFD AND RS 012 FAN REQUIRED

PDS STACK PROBE. MUST BE INSTALLED MIN.  
3X VENT DIAMETER AWAY FROM ANY ELBOW  
OR TERMINATION.

METAL-FAB 12" B-VENT PIPE W/  
DOWN-DRAFT DIVERTER. MAINTAIN  
MIN. 1" CLEARANCE TO COMBUSTIBLES

PDS SWITCH. MUST  
BE INSTALLED  
INDOORS

ADC 100

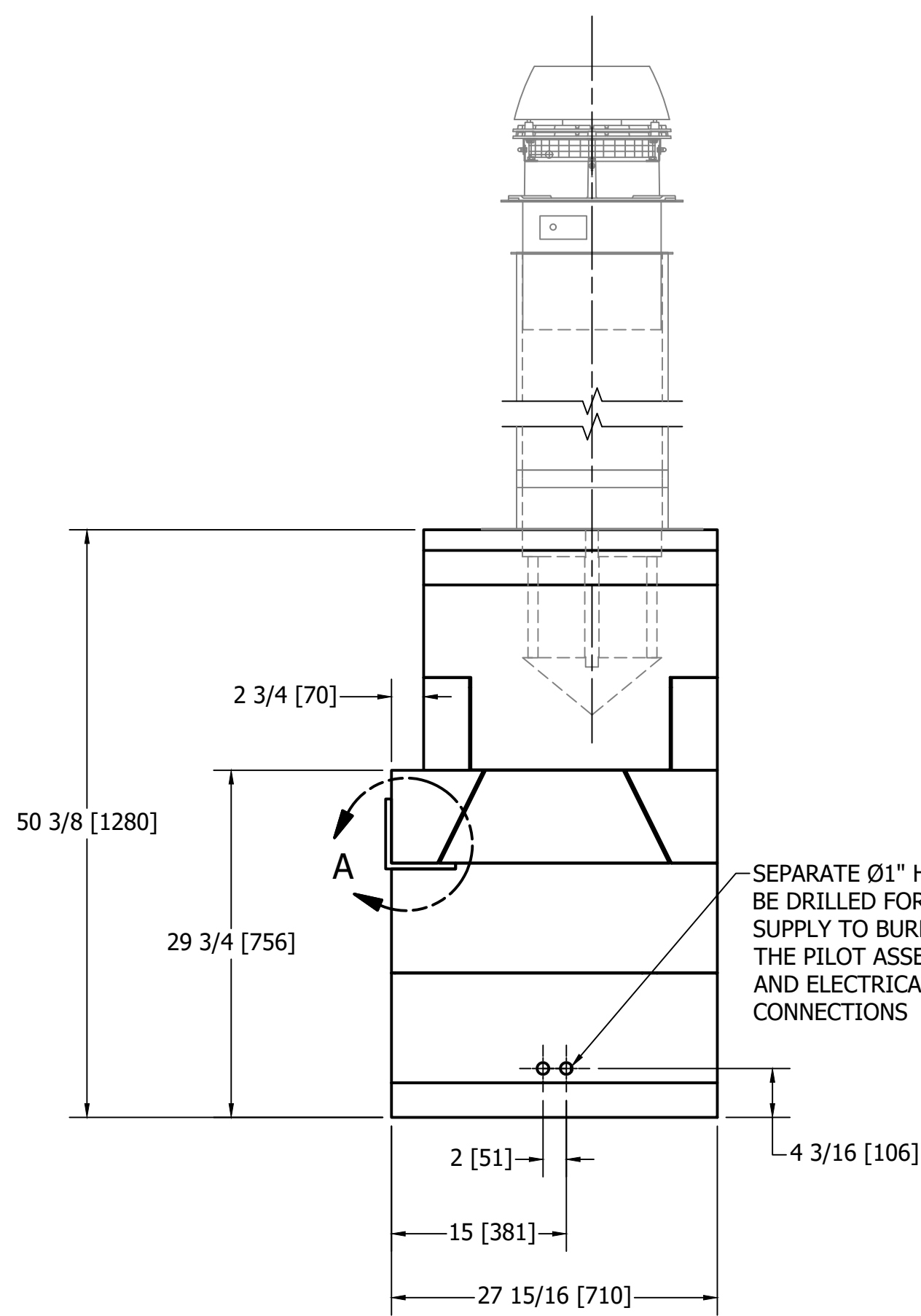
E-VK(N/P)  
VALVE  
CONTROL  
ASSEMBLY

JUNCTION BOX

120 VAC IN

3/8" GAS SUPPLY TO VALVE:  
• NG: 5" W.C. MIN./ 10.5" W.C. MAX.  
• LP: 11" W.C. MIN./ 13" W.C. MAX.

GAS AND ELECTRICAL CONNECTIONS  
TO PILOT ASSEMBLY



RIGHT-SIDE VIEW

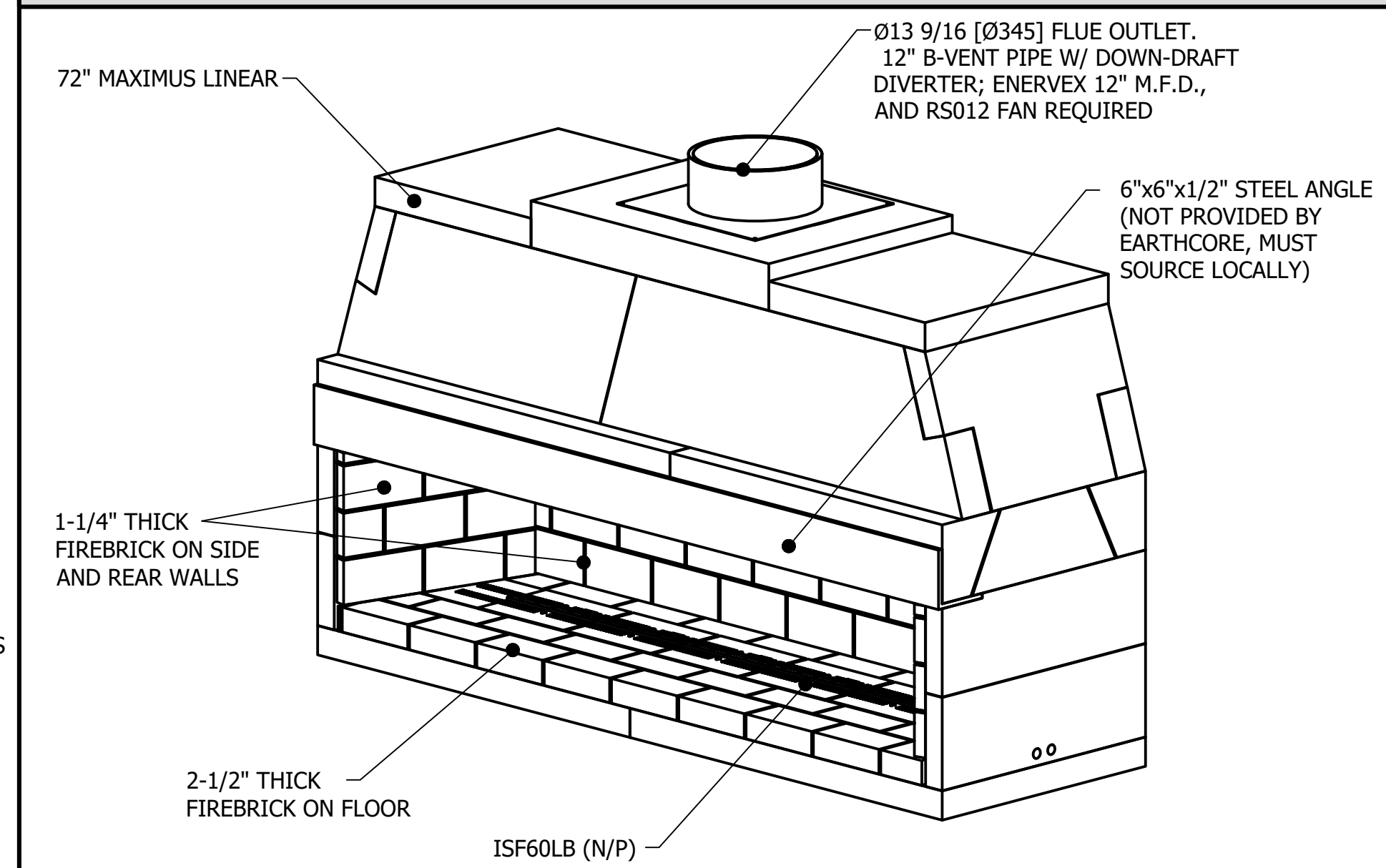
SEPARATE Ø1" HOLES TO  
BE DRILLED FOR 3/8 GAS  
SUPPLY TO BURNER AND  
THE PILOT ASSEMBLY GAS  
AND ELECTRICAL  
CONNECTIONS

PARTS LIST		
PART NUMBER	QTY	DESCRIPTION
82L72	1	ISOKERN MAXIMUS LINEAR-72
N/A	1	6"x6"x1/2" STEEL ANGLE (NOT PROVIDED BY EARTHORE, MUST SOURCE LOCALLY)
ISF60LB (N/P)	1	60" LINEAR BURNER ASSEMBLY AND VALVE/ CONTROLS (N: NATURAL GAS/ P: PROPANE)
12MDD	1	METAL-FAB 12" B-VENT DOWN DRAFT DIVERTER
OAK12NG	2	4" OUTSIDE AIR KIT (OPTIONAL)
302.0100.1200	1	ADC 100 W/ PDS
101.0499.1200	1	ENERVEX RS012 FAN
216.0100.1212	1	ENERVEX 12" MFD FOR RS 012 FAN

GENERAL NOTES

- THE ISOKERN 72" MAXIMUS LINEAR FIREPLACE IS A TOP-VENTED, GAS ONLY FIREPLACE THAT IS APPROVED FOR USE ONLY WITH THE ISOFLAMES LINEAR BURNER SYSTEM AS SHOWN IN THIS DRAWING (ISF60LB(N/P)). USAGE OF ANY OTHER BURNER IN THIS FIREPLACE IS PROHIBITED AND WILL ABSOLVE EARTHORE/ ISOKERN OR ANY DIVISION THEREOF FOR ANY INCIDENTAL OR CONSEQUENTIAL DAMAGES OR EXPENSES ARISING OUT OF THE USE OF THIS FIREPLACE.
- THIS FIREPLACE'S BURNER SYSTEM (ISF60LB N/P) COMES WITH A GAS CONTROL VALVE ASSEMBLY (E-VK(N/P)) THAT INCLUDES AN AUTOMATIC DRAFT AND SAFETY SYSTEM.
- THIS APPLIANCE IS ONLY FOR USE WITH THE TYPE OF GAS INDICATED ON THE BURNER RATING PLATE. VERIFY GAS SUPPLY AND BURNER/ VALVE ARE OF SAME TYPE PRIOR TO INSTALLATION.
- THE EXHAUST FLUE GASES ARE TO BE VENTED THROUGH THE TOP OF THE UNIT WITH 12" METAL-FAB UL LISTED B-VENT PIPING WITH DOWN-DRAFT DIVERTER. THIS TWELVE INCH (12") DIAMETER, DOUBLE WALL B-VENTING SYSTEM IS NOT SUPPLIED BUT IS REQUIRED FOR PROPER OPERATION.
- THE MAXIMUS LINEAR SERIES FIREPLACES SHALL BE INSTALLED WITH THE MINIMUM CLEARANCES TO COMBUSTIBLES AS LISTED BELOW:
  - UNIT FRONT: 0"
  - SIDES AND REAR: 1.5"
  - COMBUSTIBLE SHEATHING ABOVE OPENING TOP: 8"
  - SHEATHING OR TRIM TO OPENING SIDES: 8"
  - MANTEL ABOVE OPENING: 12"
  - OPENING TO SIDEWALLS: 24"
  - HEARTH EXTENSION BEYOND FRONT: 20"
  - HEARTH EXTENSION BEYOND SIDES (FINISHED): 12"
  - COMBUSTIBLE FLOOR: 0" (MUST USE ISOKERN BASE PLATE, "FULL" 2-1/2" FIREBRICK, AND ISOFLAMES LINEAR BURNER/ VALVE)
  - INSULATION FROM FIREBOX (UNSHIELDED): 3"
- THIS DESIGN REQUIRES MECHANICAL VENTILATION ASSISTANCE FOR GAS-ONLY OPERATION. VENT PATHS ARE LIMITED TO A MAXIMUM OF TWO 90° ELBOWS AND MAY TERMINATE EITHER VERTICALLY OR HORIZONTALLY. REFER TO INSTALLATION MANUAL FOR MAXIMUM VENT LENGTHS AND ADDITIONAL INFORMATION REGARDING FLUE RUNS. THE 82L72 WILL UTILIZE THE FOLLOWING ENERVEX SETUP:
  - DAMPER: ENERVEX 12" MFD FOR RS012
  - FLUE: METAL FAB Ø12" B-VENT (INSTALLATION MUST UTILIZE THE DOWN DRAFT DIVERTER STYLE ANCHOR PLATE)
  - FAN: ENERVEX RS012
  - CONTROLS: ENERVEX ADC 100 WITH PDS
- ENSURE 120VAC IS PROVIDED TO ENERVEX EXHAUST FANS AND CONTROLS. CONTROLS SHALL BE LOCATED IN ACCESSIBLE LOCATION.
- ALL ACCESSORIES/ EQUIPMENT INSTALLED WITH THIS FIREPLACE TO BE INSTALLED ACCORDING TO MANUFACTURER'S SPECIFICATIONS.
- INSTALL AND SUPPORT ALL FLUE TO ALL MANUFACTURER SPECIFICATIONS. ENSURE MIN.1" CLEARANCE TO COMBUSTIBLES IS KEPT AT ALL TIMES.
- DRAWINGS ARE FOR DESIGN PURPOSES ONLY AND ARE THE SOLE PROPERTY OF EARTHORE INDUSTRIES. ANY REPRODUCTION OR UNAUTHORIZED USE IS STRICTLY PROHIBITED.
- EARTHORE/ISOKERN OR ANY DIVISION THEREOF SHALL NOT BE HELD LIABLE FOR ANY INCIDENTAL OR CONSEQUENTIAL DAMAGES OR EXPENSES ARISING OUT OF THE USE OF THE FIREPLACES OR CHIMNEY SYSTEMS.
- ALWAYS CHECK LOCAL BUILDING CODES GOVERNING FIREPLACES AND FIREPLACE INSTALLATIONS.

ISOMETRIC VIEW (N.T.S.)



		UNLESS OTHERWISE STATED, ALL DIMENSIONS ARE IN INCHES UNSPECIFIED TOLERANCES: ANG. A ± LIN. X ± XX ± XXX ±		THIRD ANGLE PROJECTION 		PROJECT: 6' MAXIMUS LINEAR DESCRIPTION: FIREPLACE CONSTRUCTION DOCUMENT MATERIAL: E.C. PUMICE MIXTURE DRAWN: K.B.H. DATE: 11/10/2023 APPROVED:		SIZE: D SCALE: 1"=1'-0" DRAWING #: 82L72 REV: C	
--	--	---	--	----------------------------	--	---	--	--	--