

22' MAXIMUM

FOR THE 60 MAGNUM TO UTILIZE THE BRICK LEDGE WITH SMALL CROWN CAP, ONLY TWO OFFSET BLOCKS WILL BE REQUIRED.

NOTE: NO ADDITIONAL SUPPORT IS REQUIRED FOR OFFSET DM54 SEQUENCE UNTIL A 3rd OFFSET BLOCK IS UTILIZED.

ISOCAP SPARK ARRESTOR

DM54 SMALL CROWN CAP.

DM54 BRICK LEDGE.

ENSURE STRICT ADHERENCE TO THE INSTALLATION INSTRUCTIONS AS DETAILED IN THE 60 MAGNUM INSTALLATION MANUAL.

THE BRICK LEDGE SHALL BE EQUALLY LOADED ON ALL 4 SIDES WITH VENEER.

DM54 SHOULD BE LOCATED AS HIGH AS POSSIBLE IN THE CHIMNEY RUN TO MINIMIZE LOADING ON THE FIREBOX.

#4 (1/2") REBAR AND SOLID GROUTING SHALL BE INSTALLED PER MANUAL INSTRUCTIONS TO PROVIDE REINFORCEMENT

IMPORTANT: THE TOTAL LOAD DELIVERED INTO THE BRICK LEDGE IS JOB SPECIFIC AND WILL BE THE SUM OF: (1) THE PHYSICAL LOAD FROM VENEERS, PLUS (2) THE LOAD DUE TO WIND. THE TOTAL PHYSICAL LOAD AND LOAD DUE TO WIND MUST NOT EXCEED NINETY FOUR HUNDRED (9400) POUNDS. ....CONSULT LOCAL STRUCTURAL ENGINEER FOR PROPER JOB SPECIFIC SUPPORT STRUCTURE DESIGN, SIZING AND LOAD BEARING SPECIFICATIONS FOR THE MAGNUM MODELS 60 & 72.

DM54 OUTER CASING

DM54 INNER LINER

DM54 STARTER BLOCK

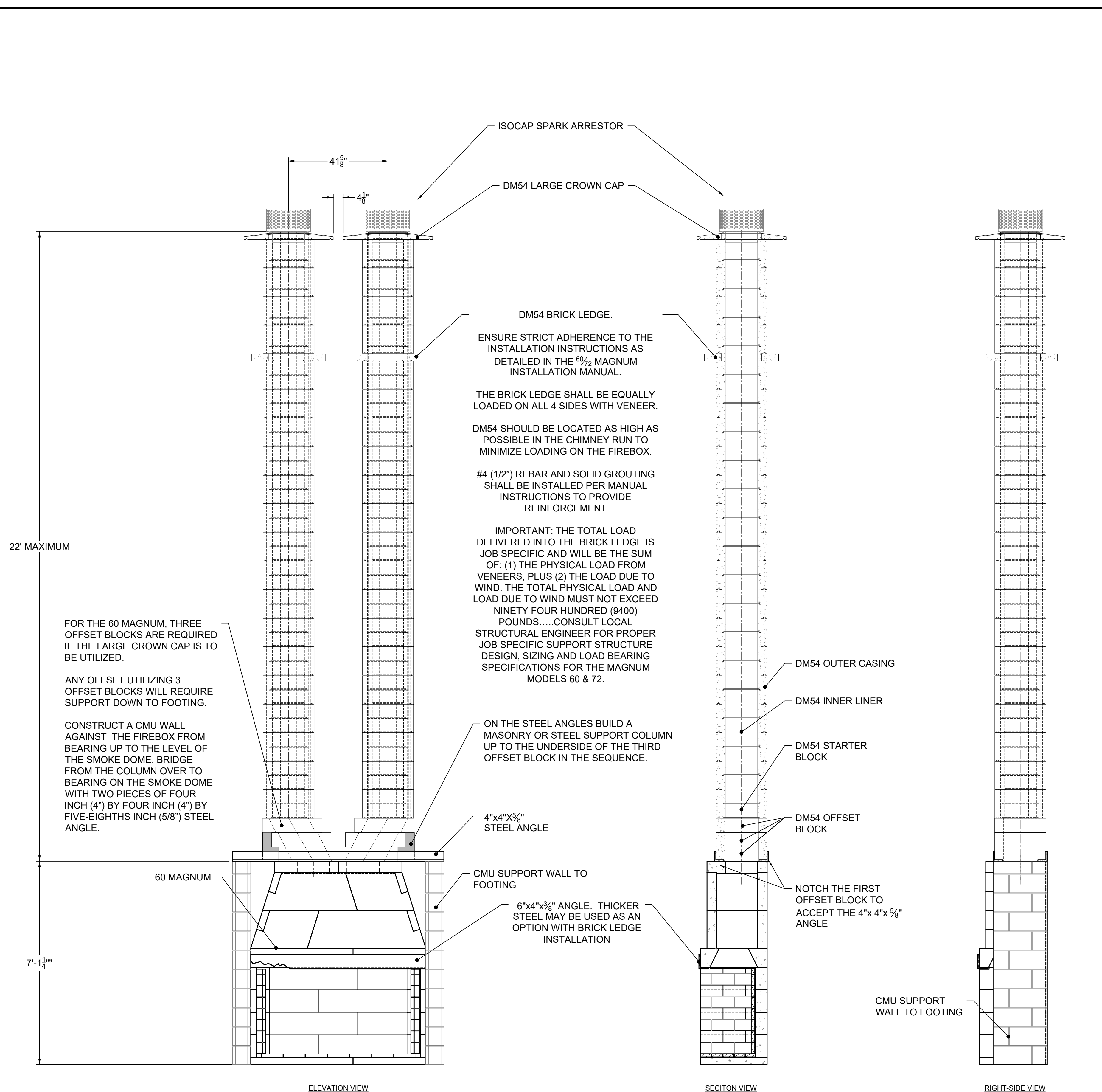
DM54 OFFSET BLOCK

6"x4"x3/8" ANGLE. THICKER STEEL MAY BE USED AS AN OPTION WITH BRICK LEDGE INSTALLATION

ELEVATION VIEW

SECTION VIEW

60 MAGNUM W/ BRICK LEDGE AND SMALL CROWN CAP  
SCALE: 1/2"=1'-0"



22' MAXIMUM

FOR THE 60 MAGNUM, THREE OFFSET BLOCKS ARE REQUIRED IF THE LARGE CROWN CAP IS TO BE UTILIZED.

ANY OFFSET UTILIZING 3 OFFSET BLOCKS WILL REQUIRE SUPPORT DOWN TO FOOTING.

CONSTRUCT A CMU WALL AGAINST THE FIREBOX FROM BEARING UP TO THE LEVEL OF THE SMOKE DOME. BRIDGE FROM THE COLUMN OVER TO BEARING ON THE SMOKE DOME WITH TWO PIECES OF FOUR INCH (4") BY FOUR INCH (4") BY FIVE-EIGHTHS INCH (5/8") STEEL ANGLE.

ISOCAP SPARK ARRESTOR

DM54 LARGE CROWN CAP

DM54 BRICK LEDGE.

ENSURE STRICT ADHERENCE TO THE INSTALLATION INSTRUCTIONS AS DETAILED IN THE 60 MAGNUM INSTALLATION MANUAL.

THE BRICK LEDGE SHALL BE EQUALLY LOADED ON ALL 4 SIDES WITH VENEER.

DM54 SHOULD BE LOCATED AS HIGH AS POSSIBLE IN THE CHIMNEY RUN TO MINIMIZE LOADING ON THE FIREBOX.

#4 (1/2") REBAR AND SOLID GROUTING SHALL BE INSTALLED PER MANUAL INSTRUCTIONS TO PROVIDE REINFORCEMENT

IMPORTANT: THE TOTAL LOAD DELIVERED INTO THE BRICK LEDGE IS JOB SPECIFIC AND WILL BE THE SUM OF: (1) THE PHYSICAL LOAD FROM VENEERS, PLUS (2) THE LOAD DUE TO WIND. THE TOTAL PHYSICAL LOAD AND LOAD DUE TO WIND MUST NOT EXCEED NINETY FOUR HUNDRED (9400) POUNDS. ....CONSULT LOCAL STRUCTURAL ENGINEER FOR PROPER JOB SPECIFIC SUPPORT STRUCTURE DESIGN, SIZING AND LOAD BEARING SPECIFICATIONS FOR THE MAGNUM MODELS 60 & 72.

ON THE STEEL ANGLES BUILD A MASONRY OR STEEL SUPPORT COLUMN UP TO THE UNDERSIDE OF THE THIRD OFFSET BLOCK IN THE SEQUENCE.

DM54 OUTER CASING

DM54 INNER LINER

DM54 STARTER BLOCK

DM54 OFFSET BLOCK

4"x4"x5/8" STEEL ANGLE

CMU SUPPORT WALL TO FOOTING

6"x4"x3/8" ANGLE. THICKER STEEL MAY BE USED AS AN OPTION WITH BRICK LEDGE INSTALLATION

NOTCH THE FIRST OFFSET BLOCK TO ACCEPT THE 4"x 4"x 5/8" ANGLE

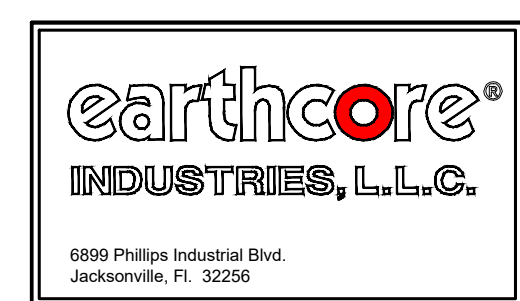
CMU SUPPORT WALL TO FOOTING

ELEVATION VIEW

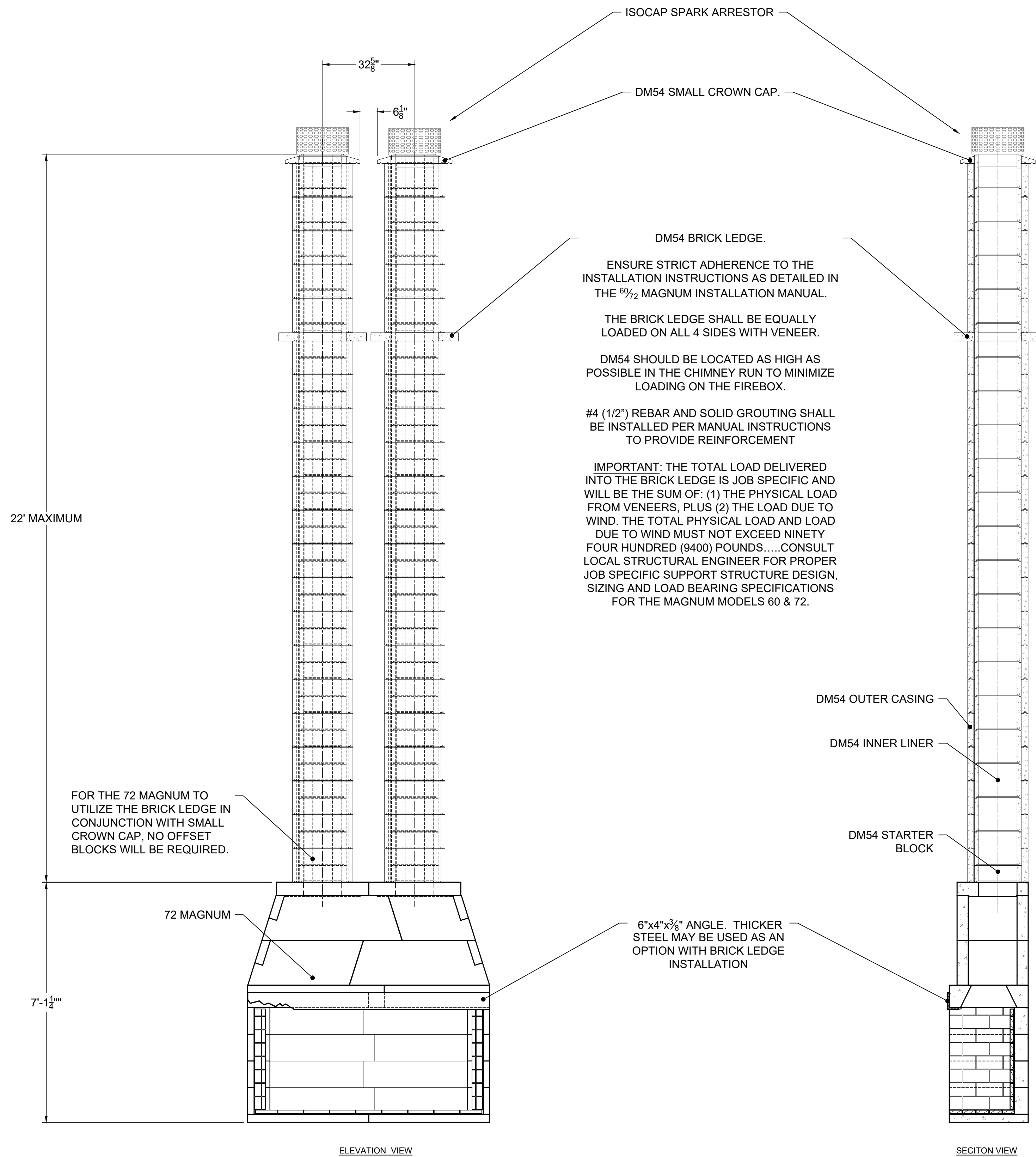
SECTION VIEW

RIGHT-SIDE VIEW

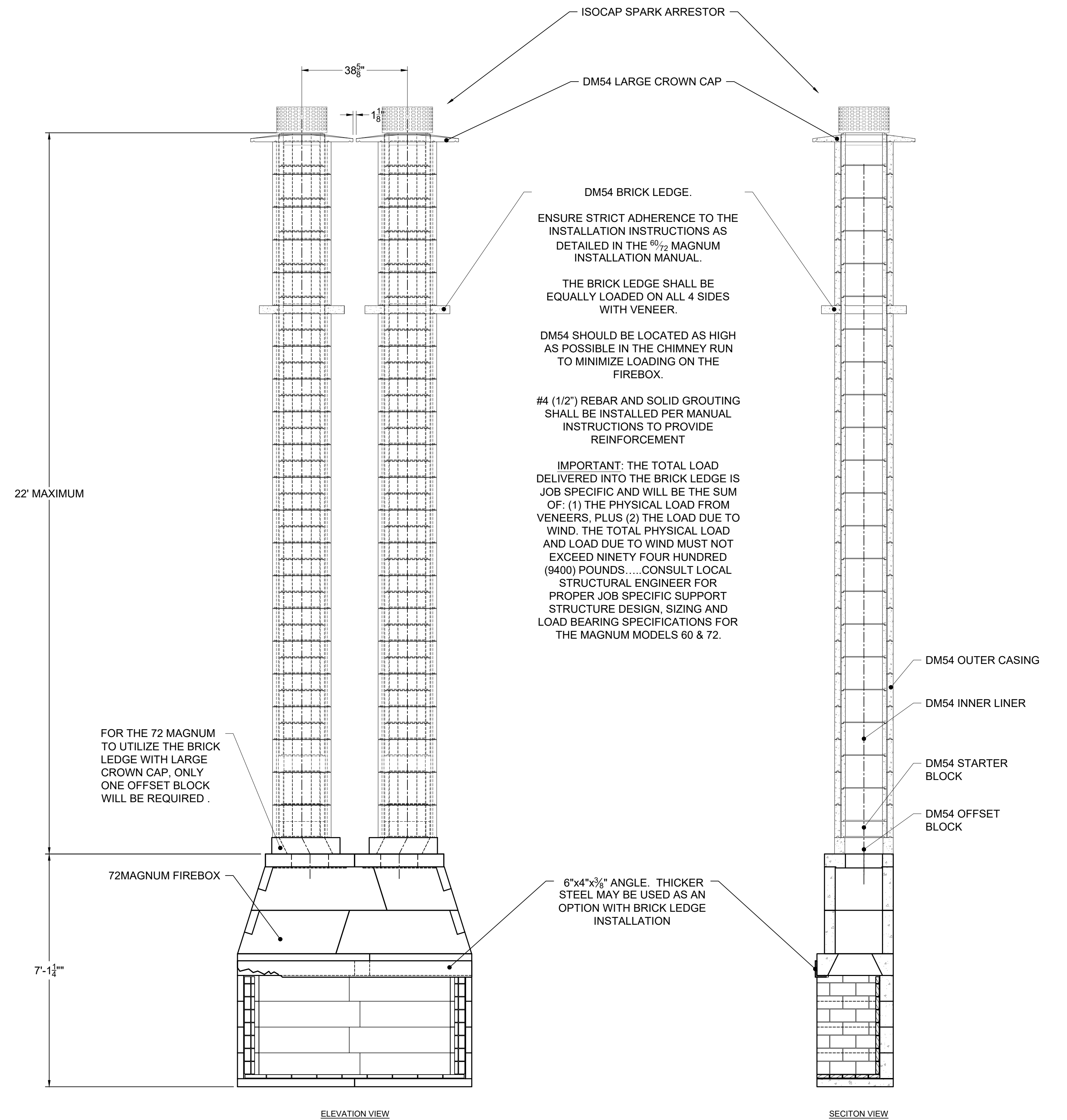
60 MAGNUM W/ BRICK LEDGE AND LARGE CROWN CAP  
SCALE: 1/2"=1'-0"



UNLESS OTHERWISE STATED, ALL DIMENSIONS ARE IN MILLIMETERS		PROJECT: 60 MAGNUM W/ BRICK LEDGE	
UNSPECIFIED TOLERANCES	THIRD ANGLE PROJECTION	DESCRIPTION: 60 MAGNUM BRICK LEDGE AND CROWN CAP APPLICATIONS	
ANG. X ±		MATERIAL:	
LIN. X ±		DRAWN: DATE: 11/13/2020	SIZE: SCALE: 1/2"=1'-0"
X ±		APPROVED: DATE:	DRAWING #: 201113BLA
XX ±			REV: A



72 MAGNUM W/ BRICK LEDGE AND SMALL CROWN CAP  
SCALE: 1/2"=1'-0"



60 MAGNUM W/ BRICK LEDGE AND LARGE CROWN CAP  
SCALE: 1/2"=1'-0"

<p>6899 Philips Industrial Blvd. Jacksonville, FL 32256</p>	UNLESS OTHERWISE STATED, ALL DIMENSIONS ARE IN MILLIMETERS		PROJECT:	72 MAGNUM W/ BRICK LEDGE		
	UNSPECIFIED TOLERANCES	THIRD ANGLE PROJECTION	DESCRIPTION:	72 MAGNUM BRICK LEDGE AND CROWN CAP APPLICATIONS		
ANG. X ±		MATERIAL:				
LIN. X ±		DRAWN:	DATE:	11/13/2020	SIZE:	SCALE:
X ±		APPROVED:	DATE:		D	1/2"=1'-0"
XX ±						DRAWING #:
						201113BLA
						REV:
						A