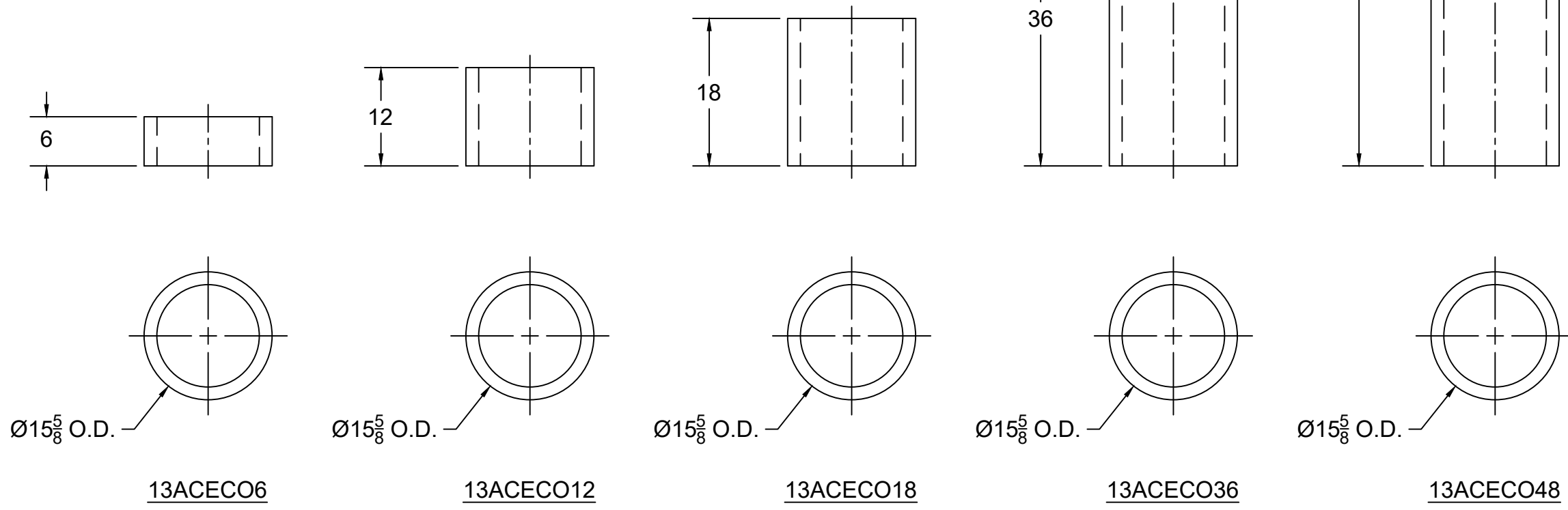
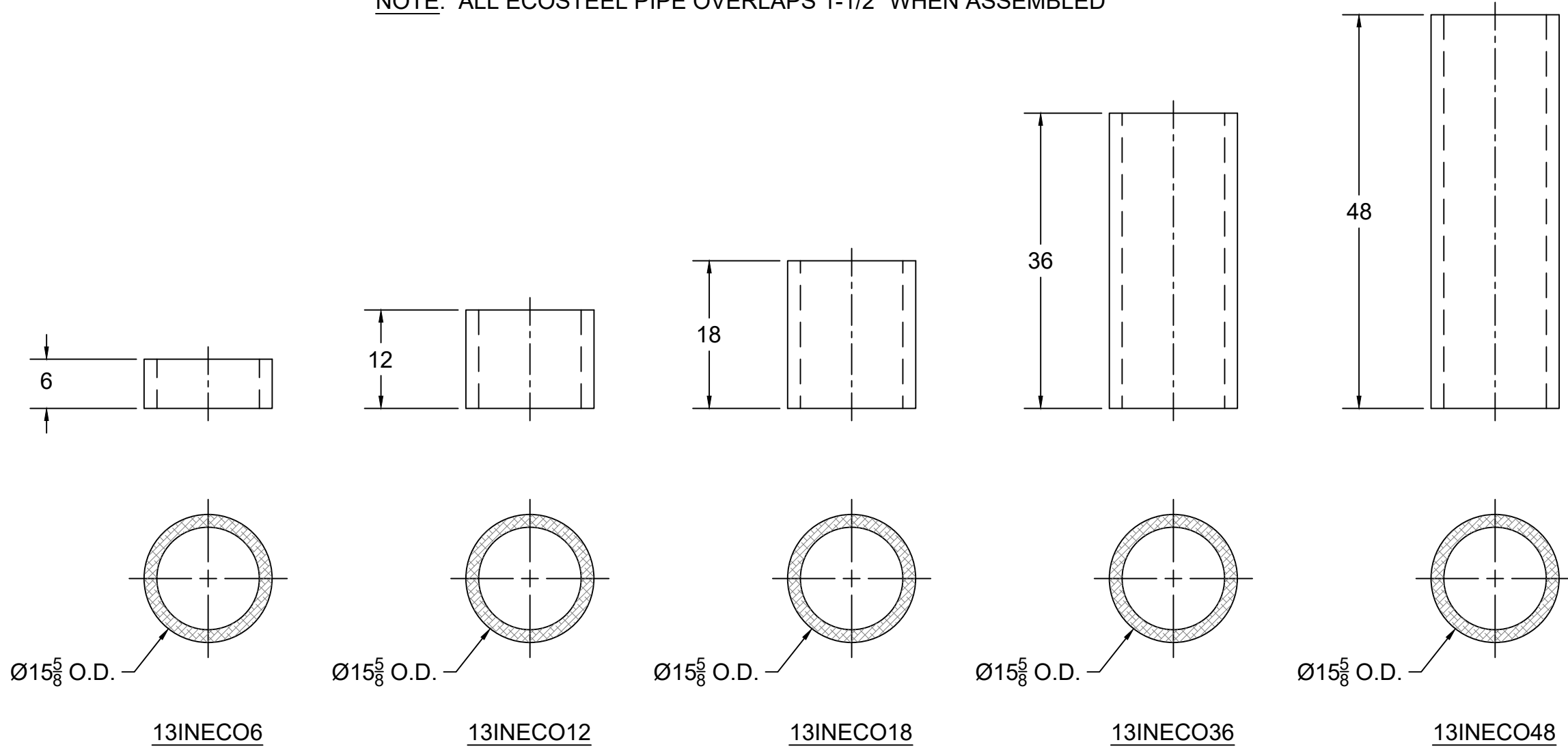


- GENERAL NOTES:**
1. All dimensions shown are nominal.
 2. The ECO-Steel Air-Cooled and Insulated chimney system is designed to extend a maximum of 60 feet vertically and with a maximum of two (2) offsets (four elbows total) of up to 30° from vertical. Contact Local Building or Fire Officials about restrictions and installation inspection in your area .Frame all Openings/ Penetrations to 20" x 20".
 3. ECO-Steel Air-Cooled and Insulated Chimney is not designed for use on products that operate at continuous temperatures in excess of 1000°F.
 4. Maintain minimum 2" clearance to combustibles at all times".



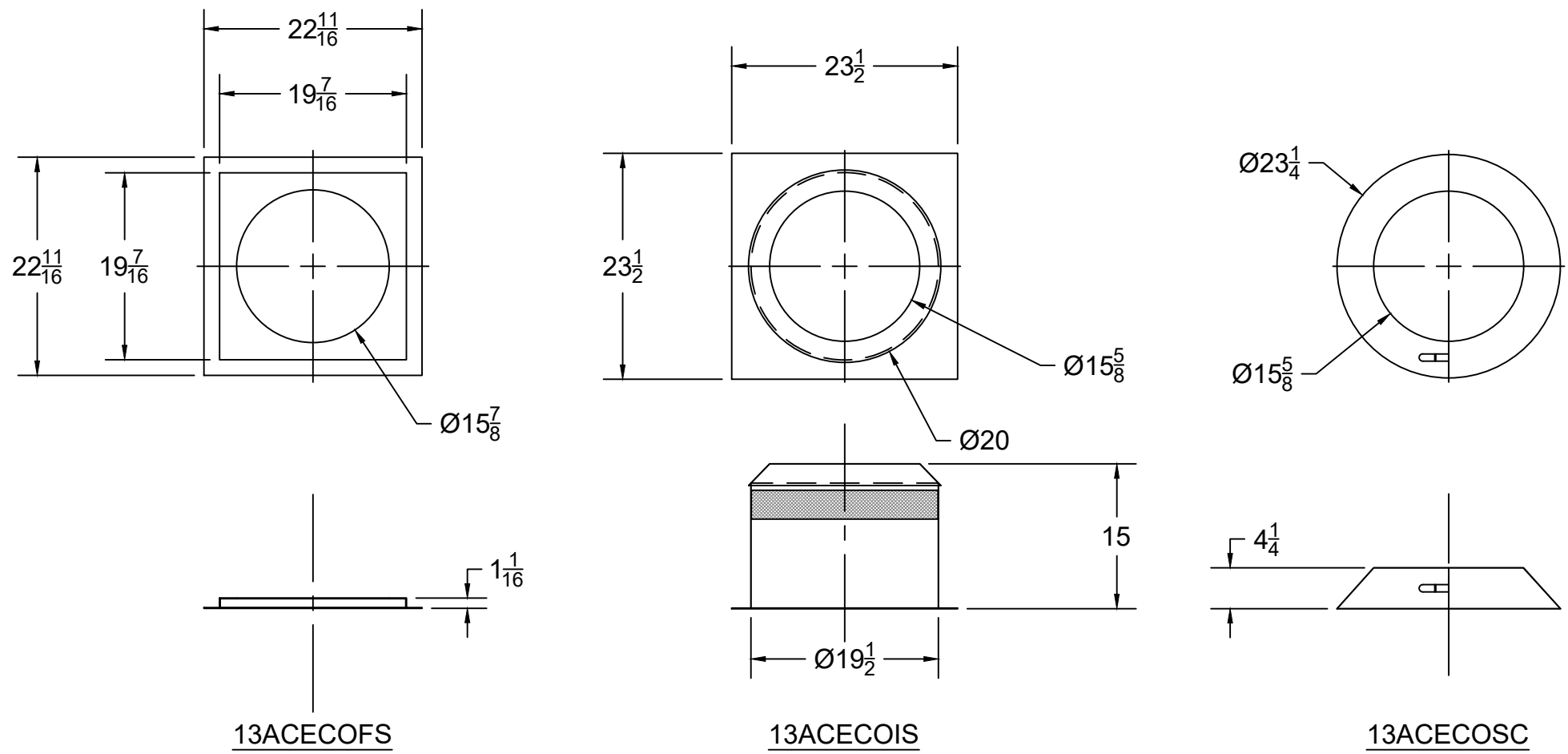
ECOSTEEL AIR-COOLED STRAIGHT PIPE LENGTHS

NOTE: ALL ECOSTEEL PIPE OVERLAPS 1-1/2" WHEN ASSEMBLED



ECOSTEEL INSULATED STRAIGHT PIPE LENGTHS

NOTE: ALL ECOSTEEL PIPE OVERLAPS 1-1/2" WHEN ASSEMBLED



ECOSTEEL FIRESTOP

NOTE: FOR USE WITH AIR-COOLED OR INSULATED ECOSTEEL PIPE

NOTE: REQUIRED AT EVERY FLOOR/ CEILING PENETRATION (EXCLUDING ROOF)

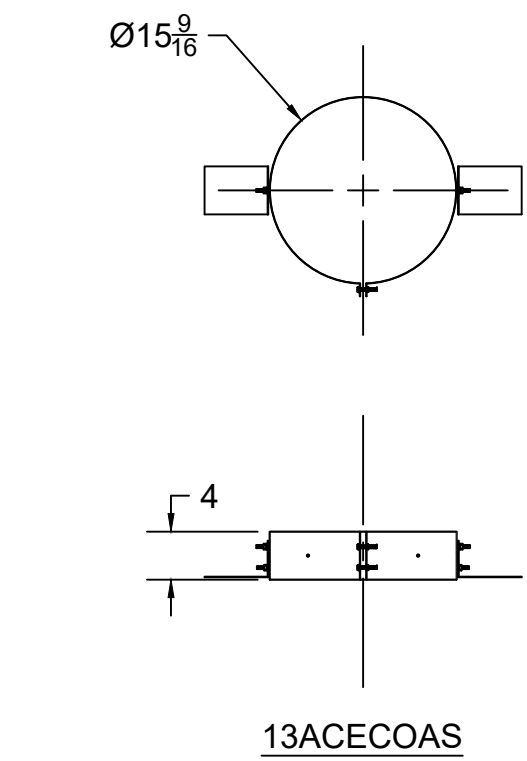
ECOSTEEL ATTIC INSULATION SHIELD

NOTE: FOR USE WITH AIR-COOLED OR INSULATED ECOSTEEL PIPE

NOTE: REQUIRED ANY TIME FLUE PASSES IN ATTIC WHETHER INSULATION IS PRESENT OR NOT

ECOSTEEL STORM COLLAR

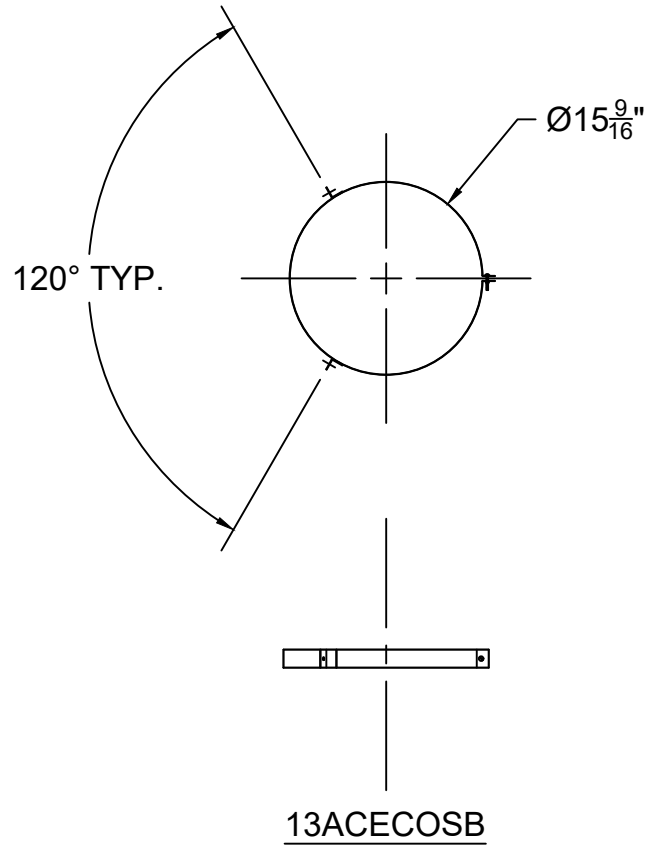
NOTE: FOR USE WITH AIR-COOLED OR INSULATED ECOSTEEL PIPE



ECOSTEEL ADJUSTABLE SUPPLEMENTARY SUPPORT

NOTE: FOR USE WITH AIR-COOLED OR INSULATED ECOSTEEL PIPE

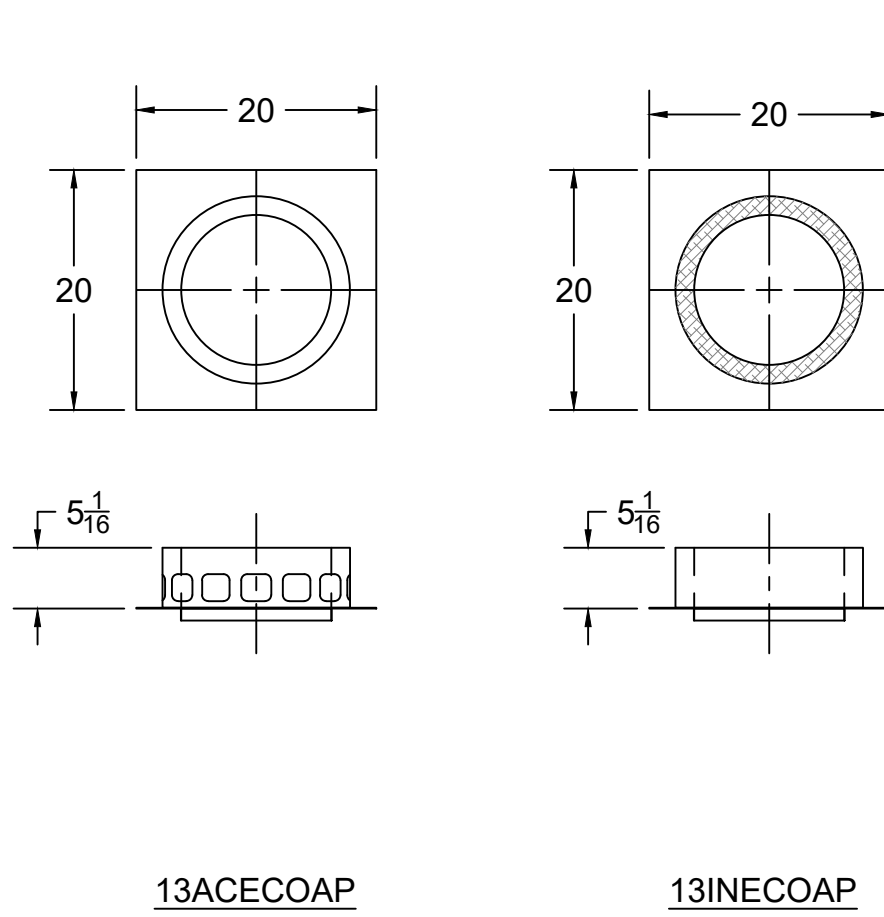
NOTE: REQUIRED WHENEVER CHIMNEY HEIGHT EXCEEDS 50' (NOTE: MAX. HEIGHT OF NATURALLY DRAFTED ECOSTEEL IS 60')



ECOSTEEL SUPPORT BAND ASSEMBLY

NOTE: FOR USE WITH AIR-COOLED OR INSULATED ECOSTEEL PIPE

NOTE: REQUIRED AT 4' INTERVALS BETWEEN ELBOWS; MAY BE REQUIRED TO MAINTAIN VERTICAL ORIENTATION OF FLUE RUNS

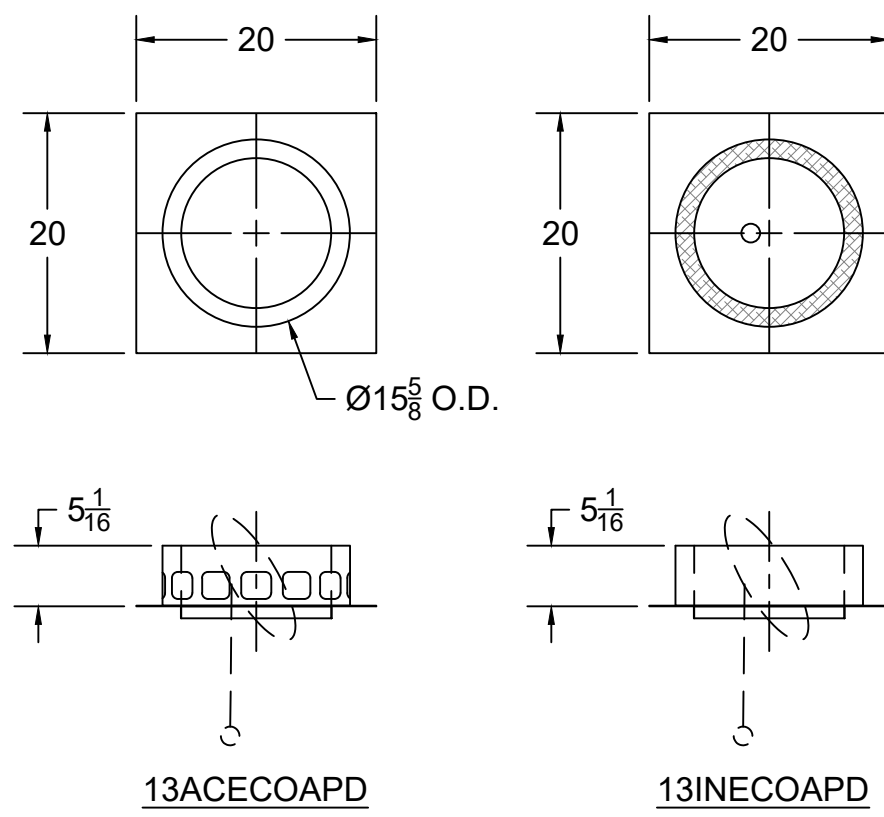


13ACECOAP

ECOSTEEL AIR-COOLED ANCHOR PLATE

13INECOAP

ECOSTEEL INSULATED ANCHOR PLATE

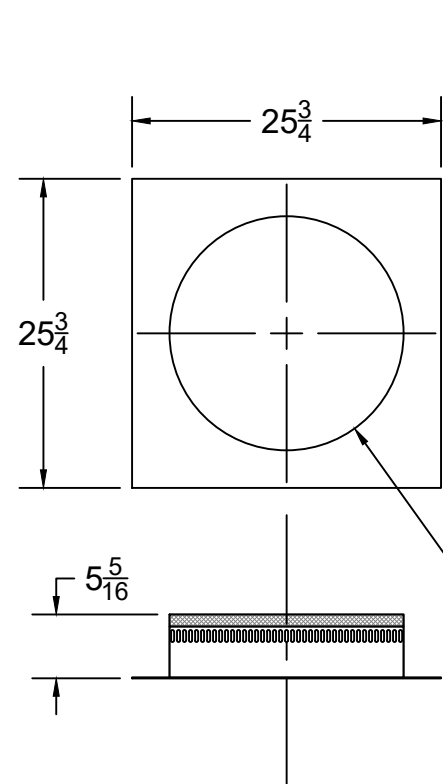


13ACECOAPD

ECOSTEEL AIR-COOLED ANCHOR PLATE W/ DAMPER

13INECOAPD

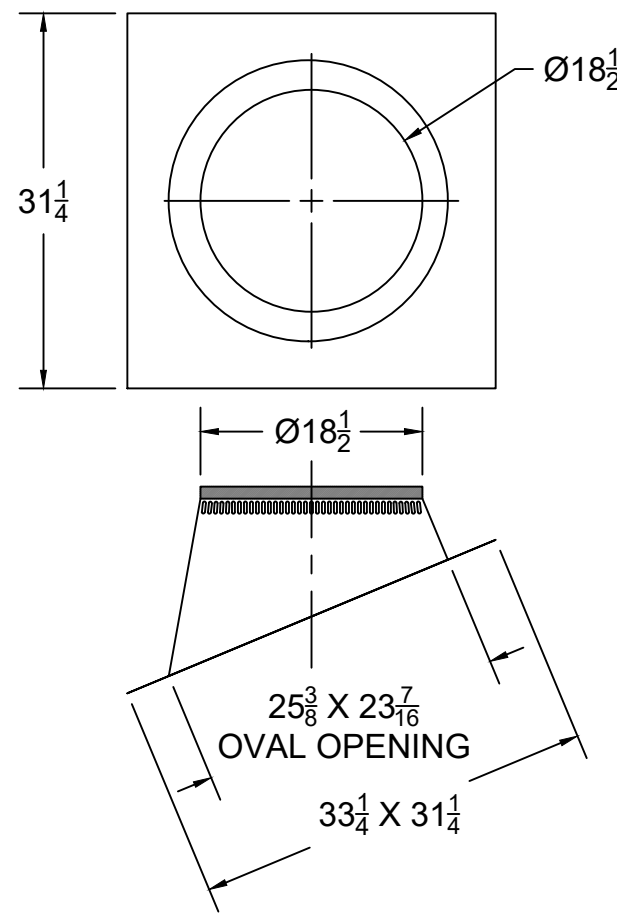
ECOSTEEL INSULATED ANCHOR PLATE W/ DAMPER



13ACECOFC

ECOSTEEL CHASE TOP FLASHING

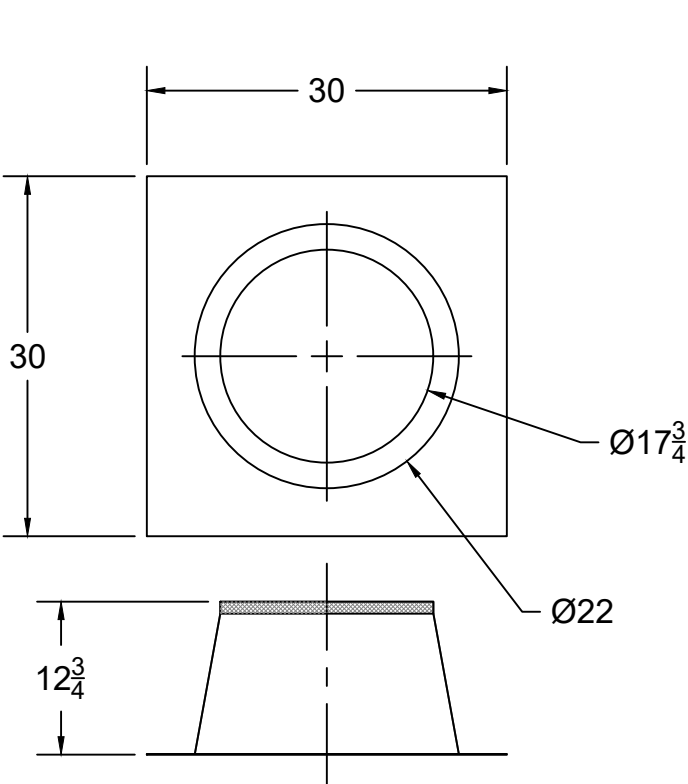
NOTE: FOR USE WITH AIR-COOLED OR INSULATED ECOSTEEL PIPE



13ACECOF

ECOSTEEL 2/12 to 5/12 PITCH FLASHING

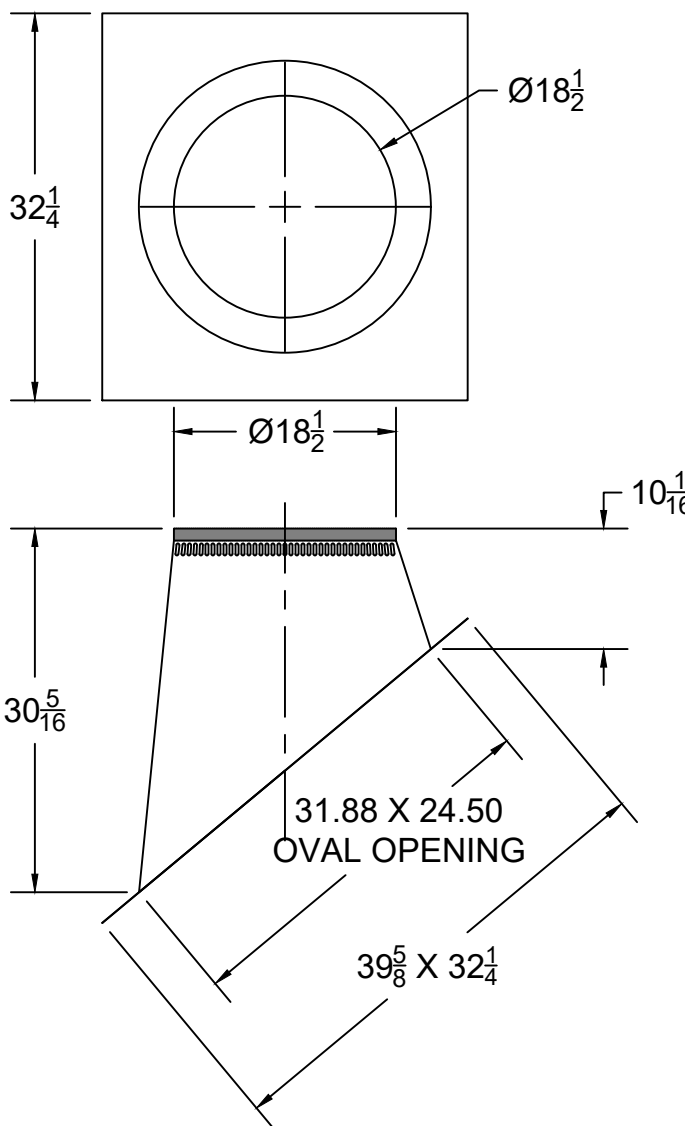
NOTE: FOR USE WITH AIR-COOLED OR INSULATED ECOSTEEL PIPE



13ACECOFT

ECOSTEEL TALL CONE FLASHING

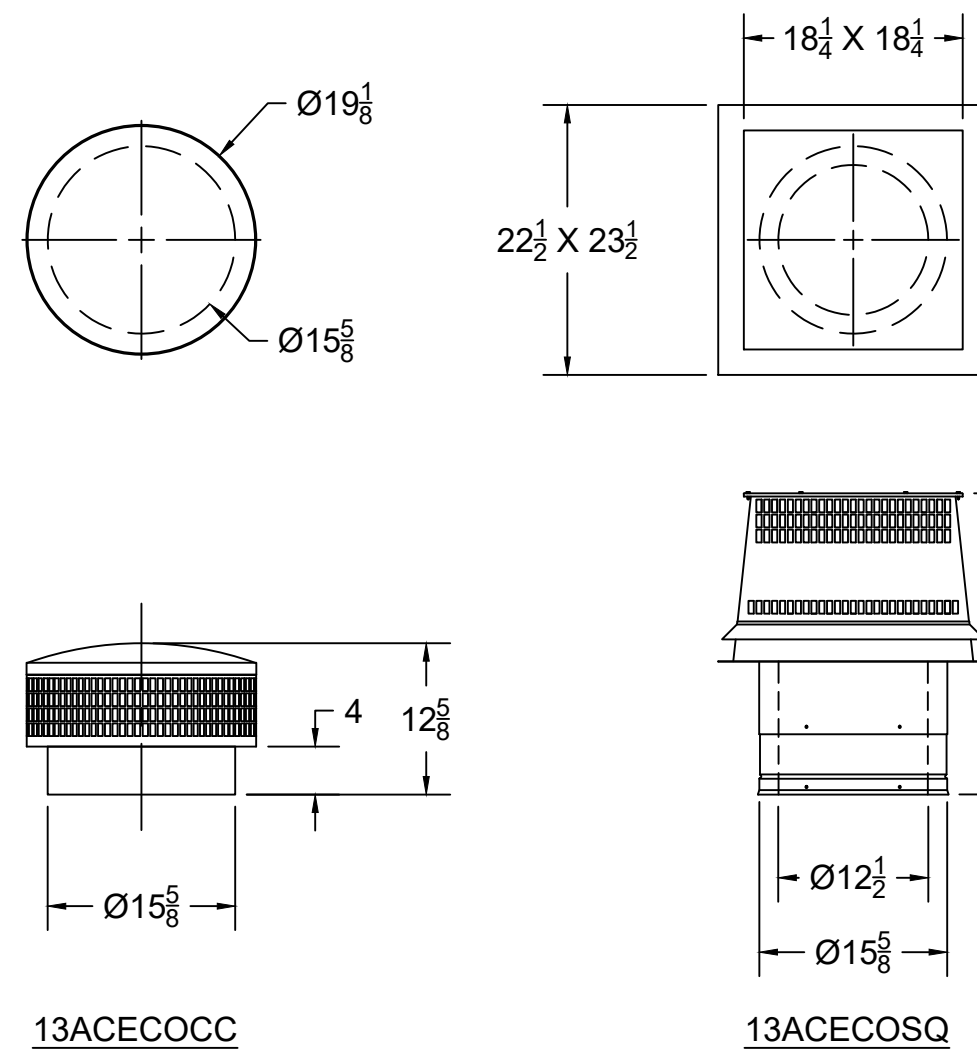
NOTE: FOR USE WITH AIR-COOLED OR INSULATED ECOSTEEL PIPE



13ACECOF10

ECOSTEEL 6/12 to 10/12 PITCH FLASHING

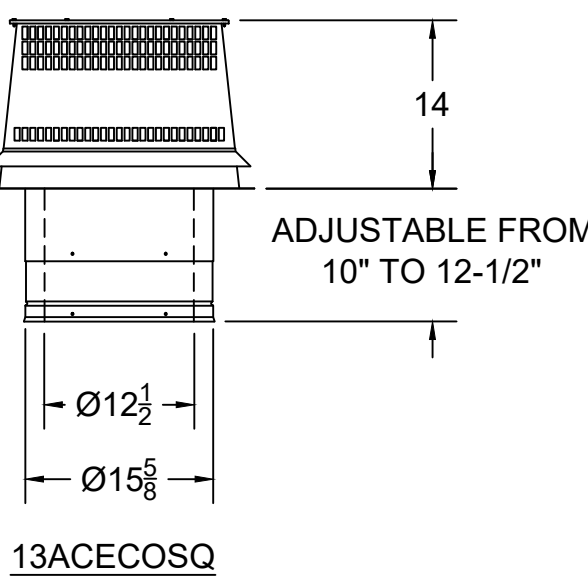
NOTE: FOR USE WITH AIR-COOLED OR INSULATED ECOSTEEL PIPE



13ACECOCC

ECOSTEEL CHIMNEY CAP

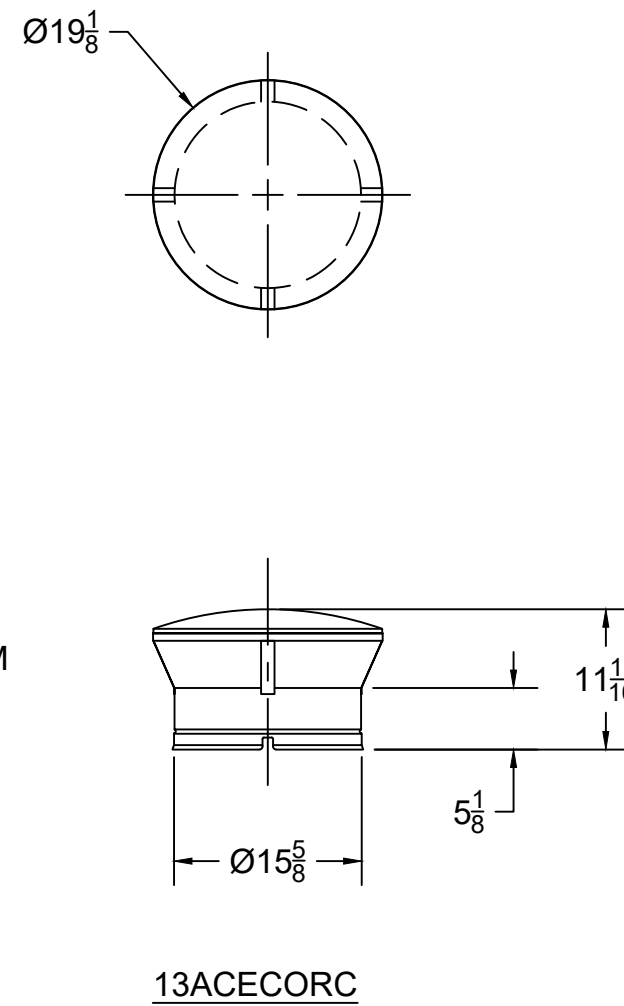
NOTE: FOR USE WITH AIR-COOLED OR INSULATED ECOSTEEL PIPE



13ACECOSQ

ECOSTEEL SQUARE TERMINATION CAP

NOTE: FOR USE WITH AIR-COOLED OR INSULATED ECOSTEEL PIPE



13ACECORC

ECOSTEEL RAIN CAP

NOTE: FOR USE WITH AIR-COOLED OR INSULATED ECOSTEEL PIPE

NOTE: REQUIRED FOR SHROUD INSTALLATIONS



UNLESS OTHERWISE STATED, ALL DIMENSIONS ARE IN INCHES				PROJECT: ECOSTEEL			
UNSPECIFIED TOLERANCES		THIRD ANGLE PROJECTION		DESCRIPTION: ECOSTEEL AIR-COOLED AND INSULATED COMPONENTS			
ANG.	A	±					
LIN.	X	±					
	XX	±					
	XXX	±					
APPROVED:		DATE:		DATE:		SHEET #	
		5/20/2025		D		OF	