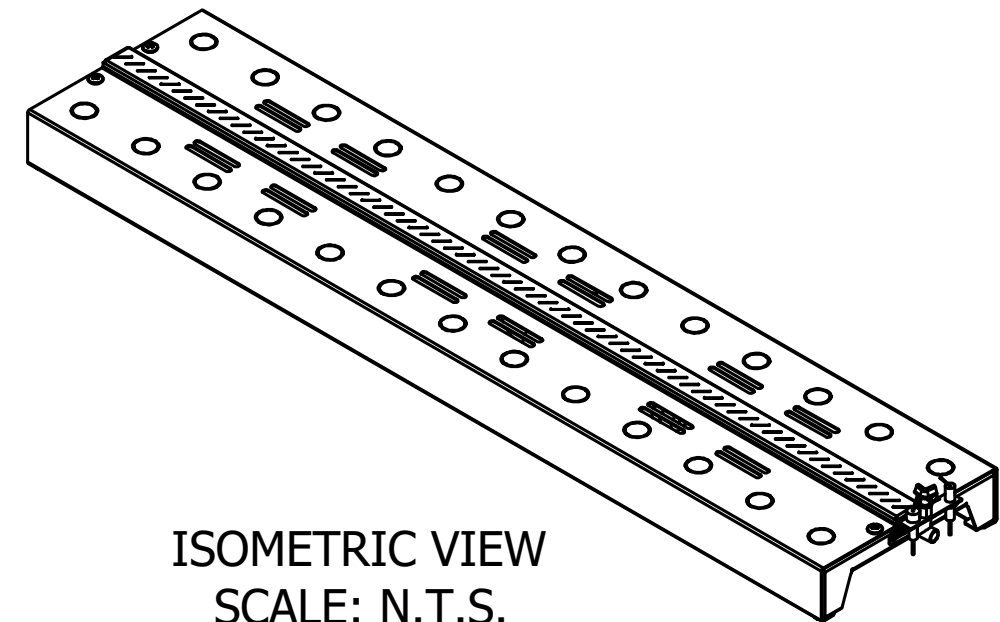


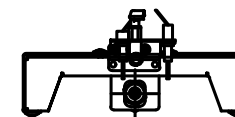
TOP



ISOMETRIC VIEW  
SCALE: N.T.S.



FRONT



RIGHT-SIDE

1/2 FLEX LINE CONNECTION TO  
3/8 GAS SUPPLY.

(NOT SHOWN TRUE LENGTH)

GENERAL NOTES:

1. THE ISOFLAMES VENT-FREE LINEAR BURNERS ARE UNVENTED GAS-FIRED HEATERS ; TESTED AND LISTED TO ANSI Z21.11.2--2019; GAS-FIRED ROOM HEATERS, UNVENTED ROOM HEATERS (PFS REPORT NO. F23-230).
2. THIS APPLIANCE USES AIR (OXYGEN) FROM THE ROOM IN WHICH IT IS INSTALLED. PROVISIONS FOR ADEQUATE COMBUSTION AND VENTILATION AIR MUST BE PROVIDED. INSTALLATION, SERVICE, AND THE PROVISIONS FOR COMBUSTION AND VENTILATION AIR MUST CONFORM WITH LOCAL CODES AND WITH THE NATIONAL FUEL GAS CODE, ANSI Z223.1/NFPA 54, OR THE CSA B149.1, NATURAL GAS AND PROPANE INSTALLATION CODE. THIS APPLIANCE SHALL NOT BE INSTALLED IN A BEDROOM.
3. THE VF42LBN BURNER IS DESIGNED ONLY FOR USAGE WITH NATURAL GAS AND MUST ONLY BE INSTALLED WITH THE VF-VKN GAS VALVE SYSTEM. THIS VALVE SYSTEM COMES IN A 12" x 12" x 4" NEMA 1 ENCLOSURE AND MUST BE INSTALLED WITHIN 7' OF FIREPLACE. VALVE SYSTEM REQUIRES 120 VAC.
4. GAS TYPE IS AS INDICATED ON RATING PLATE. DO NOT USE NATURAL GAS BURNER WITH PROPANE, OR A PROPANE BURNER WITH NATURAL GAS. APPLIANCE IS NOT FIELD CONVERTIBLE FOR USE WITH OTHER GASES.
5. DRAWINGS ARE FOR DESIGN PURPOSES ONLY AND ARE THE SOLE PROPERTY OF EARTHCORE INDUSTRIES. ANY REPRODUCTION OR UNAUTHORIZED USE IS STRICTLY PROHIBITED. EARTHCORE/ ISOKERN OR ANY DIVISION THEREOF SHALL NOT BE HELD LIABLE FOR ANY INCIDENTAL OR CONSEQUENTIAL DAMAGES OR EXPENSES ARISING OUT OF THE USE OF THEIR BURNERS, FIREPLACES OR CHIMNEY SYSTEMS.

ISOFLAMES VENTLESS LINEAR BURNER (NG): LISTED ANSI Z21.11.2												
PART NUMBER	BTU		PRESSURE: W.C.			MIN FIREPLACE DIMS (in)						
	MAX	MIN	INLET MAX	INLET MIN	MANIFOLD	DEPTH	HEIGHT	REAR WIDTH	FRONT WIDTH	WIDTH-STRAIGHT SIDEWALLS		
VP42LBN	37.5K	25K	10.5	5	3.6 - 1.6	16	16	42	49.75	45.5		
<div>earthcore® INDUSTRIES, L.L.C.</div> <div>6899 Phillips Industrial Blvd. Jacksonville, Fl. 32256</div>			UNLESS OTHERWISE STATED, ALL DIMENSIONS ARE IN INCHES			PROJECT: ISOFLAMES 42" VENTLESS LINEAR BURNER (NG)						
			UNSPECIFIED TOLERANCES		THIRD ANGLE PROJECTION	DESCRIPTION: OVERALL DIMENSIONS/ SPECIFICATION						
			ANG.	.X ±		MATERIAL: VARIES						
			LIN.	.X ±		DRAWN: K.B.H		DATE: 5/1/2025	SIZE: A	SCALE: 1:8	DRAWING #: VF42LBN-SPEC	REV:
				.XX ±		APPROVED:		DATE:				
				.XXX ±								
								DO NOT SCALE	SHEET # 1 OF 1			